

'GREEN DOLPHY'

(MEDIUM UP)

12 BAR BLUES IN 'A' - FREEISH !

SWING

3 TIMES

IMPROVISE MELODY!

(TUTTI)

E^ø7 A⁷ALT. C#m⁷ F#⁷ Dm⁷ G⁷ Cmaj⁷ Bmaj⁷

A

(SWING)

Bm⁷ Bm⁷/A G#^ø7 C#⁷ F#m⁷ F#m⁷/E D#^ø7 G#⁷ C#m⁷ F#⁷ Bm⁷ E⁷

E^ø7 A⁷ALT. C#m⁷ F#⁷ Dm⁷ G⁷ Cmaj⁷ Bmaj⁷

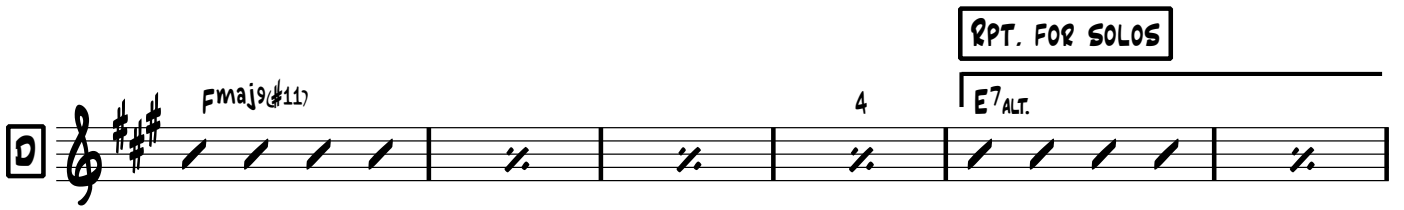
B

Bm⁷ Bm⁷/A G#^ø7 C#⁷ F#m⁷ F#m⁷/E D#^ø7 G#⁷ C#m⁷ F#⁷ Bm⁷ E⁷

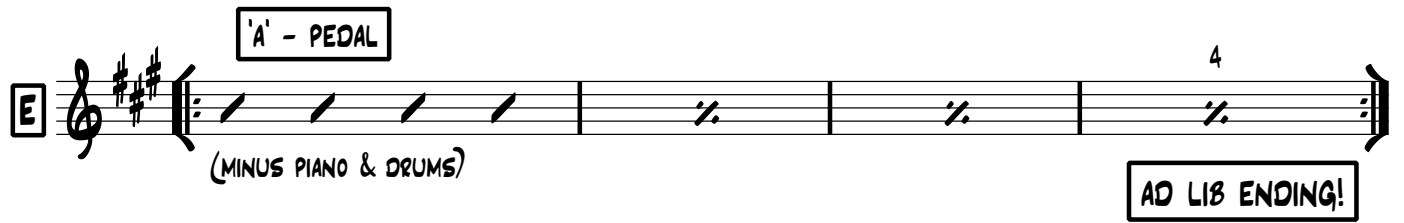
Gmaj⁹(#11) 4 F#⁷ALT. 4

C

LATIN

D 



E 

PIANO

'GREEN DOLPHY'

PAUL DAVID SEAMAN (2012)

DEDICATED TO STAN SULZMANN (UK)

(MEDIUM UP)

3 TIMES

12

SWING

SAX IMPROV. MELODY

(TUTTI)

G^ø7 C⁷ALT. E^m7 A⁷ F^m7 B^b7 E^bmaj7 D^mmaj7

A

(SWING)

D^m7 D^m7/C B^ø7 E⁷ A^m7 A^m7/G F[#]ø7 B⁷ E^m7 A⁷ D^m7 G⁷

G^ø7 C⁷ALT. E^m7 A⁷ F^m7 B^b7 E^bmaj7 D^mmaj7

B

D^m7 D^m7/C B^ø7 E⁷ A^m7 A^m7/G F[#]ø7 B⁷ E^m7 A⁷ D^m7 G⁷

B^bmaj9(#11)

4

A⁷ALT.

4

C

LATIN

D *Abmaj9(#11)* **RPT. FOR SOLOS**

A musical staff in treble clef starting with a square box containing the letter 'D'. The staff contains six measures. The first measure has a chord symbol *Abmaj9(#11)* above it and is filled with four diagonal slashes. The second, third, and fourth measures each contain a double bar line with a slash through it. Above the fourth measure is the number '4'. The fifth measure is filled with four diagonal slashes and has a chord symbol *G7ALT.* above it. The sixth measure contains a double bar line with a slash through it. A horizontal line above the staff extends from the start of the fifth measure to the end of the sixth measure, with a box labeled 'RPT. FOR SOLOS' above it.

FOR ENDING

A musical staff in treble clef. The first measure contains a double bar line with a slash through it, with the number '4' above it. The second measure also contains a double bar line with a slash through it. A bracket above the staff spans from the start of the second measure to the end of the sixth measure, with a box labeled 'FOR ENDING' above it. The third measure is filled with four diagonal slashes and has a chord symbol *G7ALT.* above it. The fourth and fifth measures each contain a double bar line with a slash through it. The sixth measure contains a double bar line with a slash through it, with the number '4' above it.

E **INDEF**

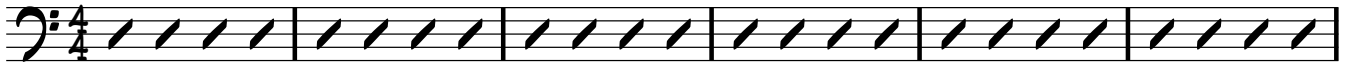
A musical staff in treble clef starting with a square box containing the letter 'E'. The staff contains a single, very long measure that spans the entire width of the staff. The measure is filled with a thick horizontal line. Above the measure is the number '4'. At the bottom right of the staff, there is a box labeled 'INDEF'.

'GREEN DOLPHY'

DEDICATED TO STAN SULZMANN (UK)

(MEDIUM UP)

12 BAR BLUES - IN 'C'



SWING

3 TIMES



SAX IMPROV. MELODY

(TUTTI)

G^ø7 C⁷ALT. Em⁷ A⁷ Fm⁷ B^b7 Ebmaj7 Dmaj7

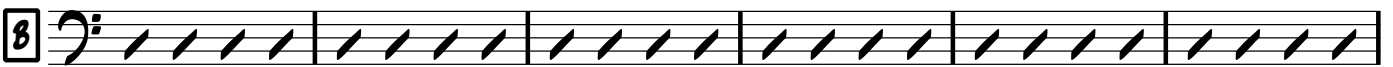


(SWING)

Dm⁷ Dm⁷/C B^ø7 E⁷ Am⁷ Am⁷/G F#m⁷(b5) B⁷ Em⁷ A⁷ Dm⁷ G⁷



G^ø7 C⁷ALT. Em⁷ A⁷ Fm⁷ B^b7 Ebmaj7 Dmaj7



Dm⁷ Dm⁷/C B^ø7 E⁷ Am⁷ Am⁷/G F#^ø7 B⁷ Em⁷ A⁷ Dm⁷ G⁷



B^bmaj9(#11)

A⁷ALT.



LATIN

v.5.

D $A\flat$ maj9(#11) RPT. FOR SOLOS

G^7 ALT.

FOR ENDING

G^7 ALT.

E **'C' - PEDAL** AD LIB ENDING!

(MINUS PIANO & DRUMS)

AD LIB ENDING!

'GREEN DOLPHY'

(MEDIUM UP)

3 TIMES

12

Drum staff with 4/4 time signature and SWING feel. A double bar line is present at the end of the staff.

SWING

SAX IMPROV. MELODY

(TUTTI)

Drum staff A with sax improv melody and swing feel. The staff contains rhythmic notation with accents and triplets. A double bar line is at the end.

(SWING)

Drum staff B with sax improv melody. The staff contains rhythmic notation with accents and triplets. A double bar line is at the end.

Drum staff with 2 and 4 measures. The staff contains rhythmic notation with accents. A double bar line is at the end.

Drum staff C with latin feel. The staff contains rhythmic notation with accents and triplets. A double bar line is at the end.

LATIN

Drum staff D with 4 measure. The staff contains rhythmic notation with accents. A double bar line is at the end.

RPT. FOR SOLOS

FOR ENDING

Two musical staves are shown. The first staff is divided into two 4-measure sections. The first section is labeled 'RPT. FOR SOLOS' and contains a drum pattern of four slashes. The second section is labeled 'FOR ENDING' and also contains a drum pattern of four slashes. A double bar line with repeat dots is placed between the two sections.

A single musical staff is shown, starting with a box containing the letter 'E' and a double bar line. The staff contains a continuous, thick horizontal line representing a drum pattern. Above the staff, a '4' indicates the duration. At the end of the staff, there is a double bar line with repeat dots and a box containing the word 'INDEF'.